

Training Module Six: TAC Application for IoT Manufacturers

September 2023 v2.1

All product names, model numbers or other manufacturer identifiers not attributed to GSMA are the property of their respective owners.
©GSMA Ltd 2023

What is a TAC and who issues it?



Type Allocation Code (TAC)

86

**Reporting
Body
identifier**

916102

Type Identifier
Indicating brand owner
and device model type

Serial Number

991292

Unique Number assigned
to individual devices
by the manufacturer

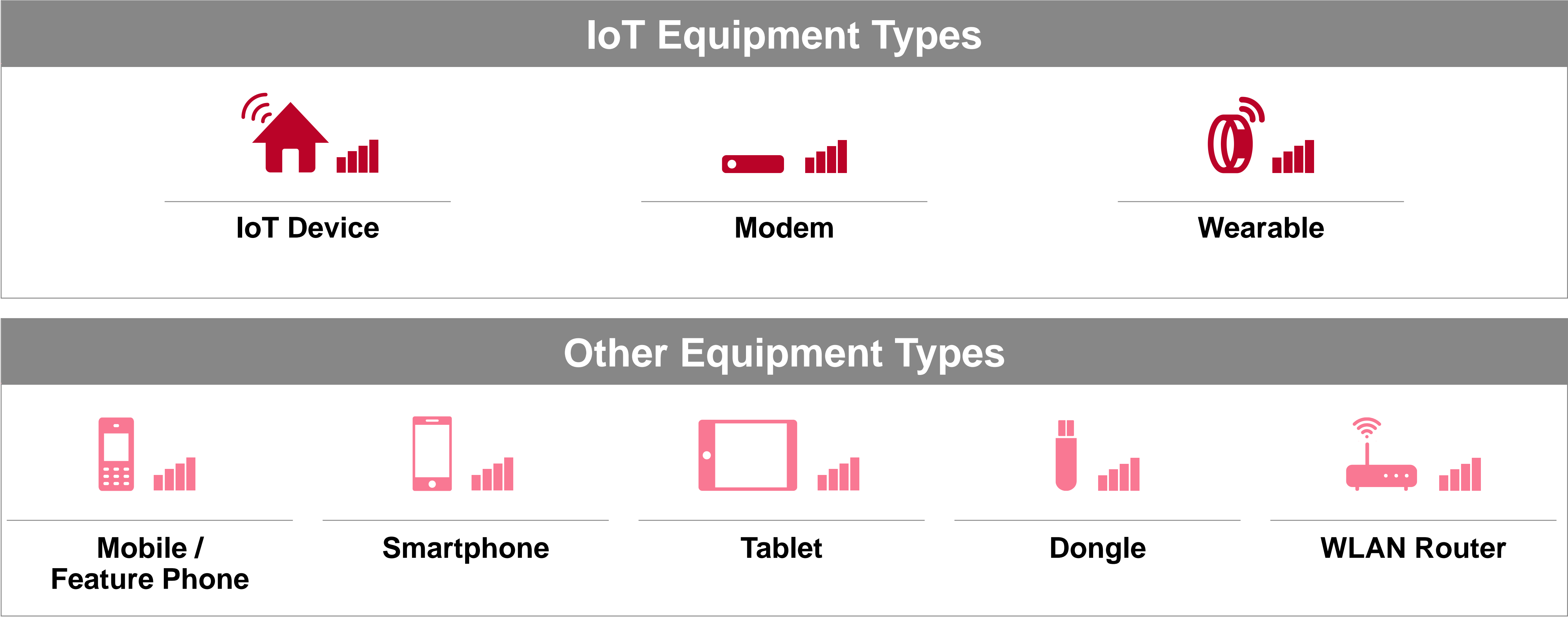
Check Digit

0

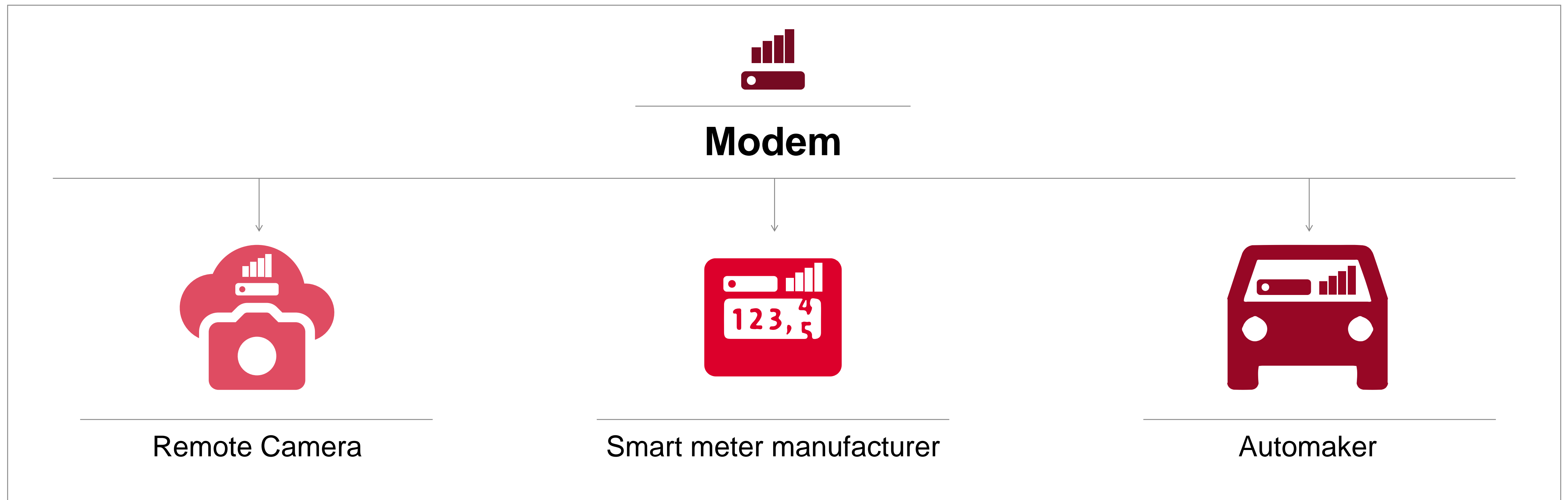
A function
of the other digits
[calculated by
the manufacturer]

The International Mobile Equipment Identifier (IMEI)
is a unique 15 digit code which identifies each *individual* mobile device

What Mobile devices need a TAC?



When IoT modems are installed in other equipment, who applies for TAC?



Modem producer applies for TAC

When do IoT require TAC?



Where a device connects to a cellular network, either a 3GPP or 3GPP2 defined network, **it needs a TAC**

2G

5G



3G

WCDMA

E-ULTRA

New Radio (NR)
Standalone/
Dual Connectivity (DC)

4G

LTE-M

FDD /TDD

MIoT

Who benefits from IoT TAC / IMEI?



IoT Brand Owners and Modem Producers

- Network connectivity
- Compliance with international trade regulation
- Type approval



Customs & Excise

- Taxation
- Certification
- Authenticity
- Counterfeit detection



Operator

- Identification
- Support
- Device blocking
- Lawful interception / location
- Updates
- Configuration
- Analytics
- Sales & marketing
- Service delivery
- Allowlist
- Fraud detection



Law Enforcement

- Theft checking
- Lawful interception / location
- Compliance checking



Government & Regulators

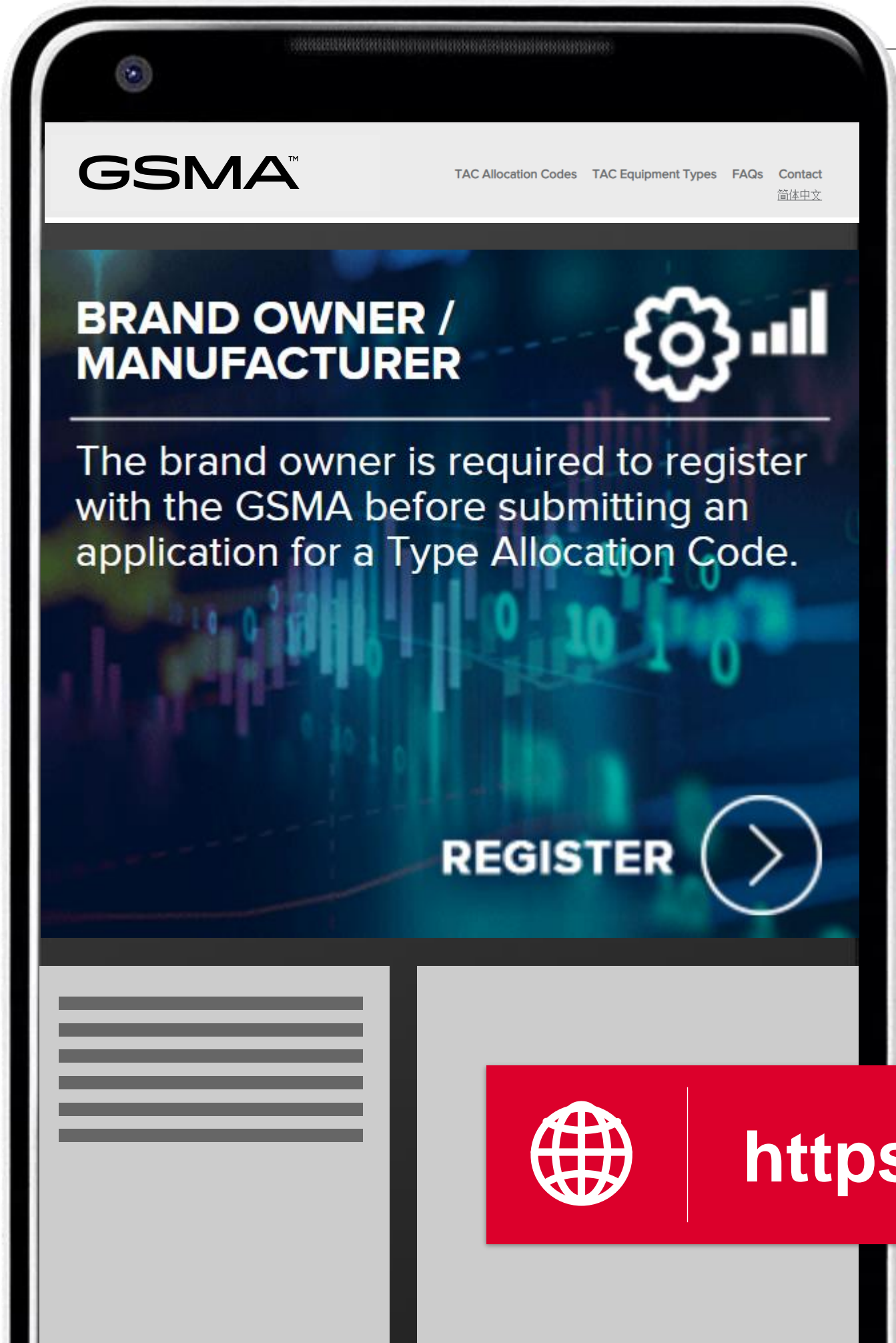
- Certification
- Type approval
- Taxation
- Crime management



IoT Service Providers

- Identification
- SW updates
- Remote control
- Support
- Blocking
- Fraud detection

Where to apply for TAC?

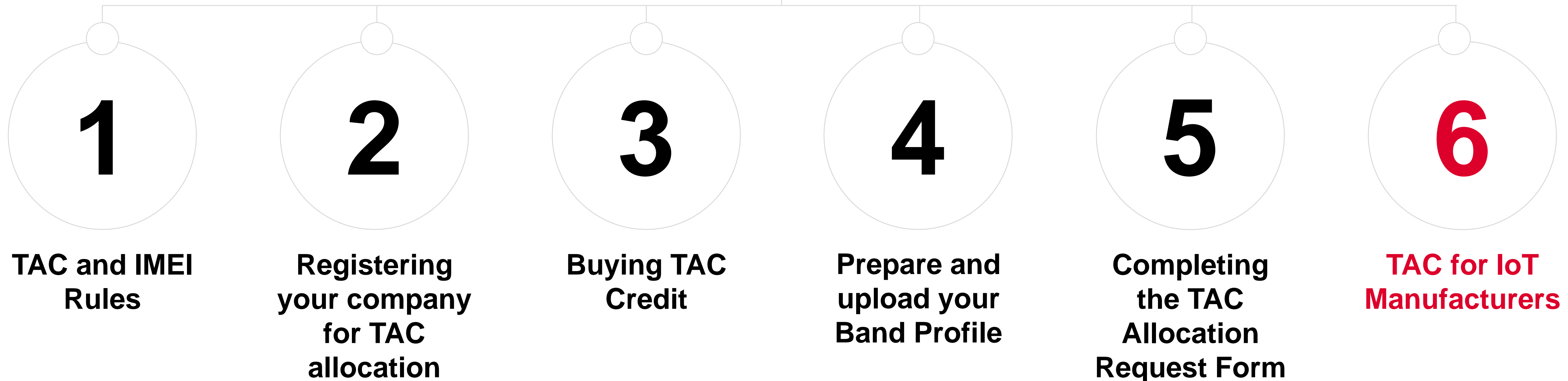
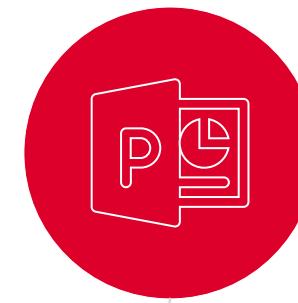


You will find
training materials
to help you



A graphic showing four training modules for GSMA TAC / IMEI allocation. The top section features a large IMEI number '357460063950799' and the text 'NEW GSMA TAC / IMEI TRAINING MODULES AVAILABLE HERE' with a right-pointing arrow. Below this are four modules, each with a download icon: 'MODULE 1: GSMA TAC ALLOCATION: GOVERNING RULES', 'MODULE 2: GSMA TAC ALLOCATION: REGISTRATION', 'MODULE 3: GSMA TAC ALLOCATION: PAYMENT', and 'MODULE 4: GSMA TAC ALLOCATION: APPLICATION FORM-FILL'.

This document is part six of six TAC training modules





www.gsma.com/tac

GSMA TAC Support



tac@gsma.com



+1 408 617 8959